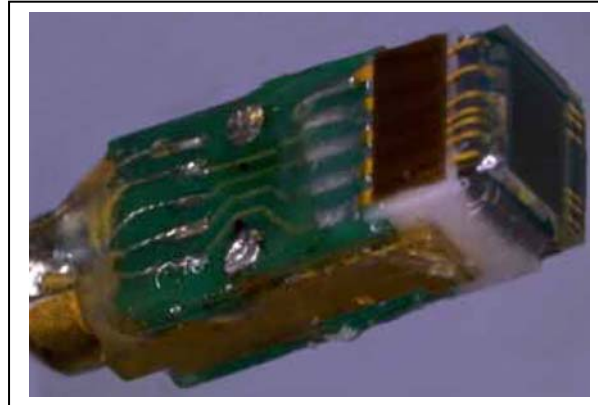


# CSH6710

1-CCD Color-Video camera head

The OEM camerahead was designed for easy integration in customer systems. The CSH6710 is a very small size solution.

The various adaptable mainboards enable the CSH6710 to be used in a wide range of applications, endo-/ boroscopes with dimension of 2.7 x 2.4 x 7.0 mm.



CSH6710/P

Camera head CSH6710

## Features

- 1/10" CCD (ICX257FKW/ICX256FKW)
- dimension 2.7 x 2.4 x 7.0mm
- High mechanical accuracy

## Applications

- Endoscopy, Dental
- Dermatology, Ophthalmology
- Image processing, Visualisation

## Delivery includes

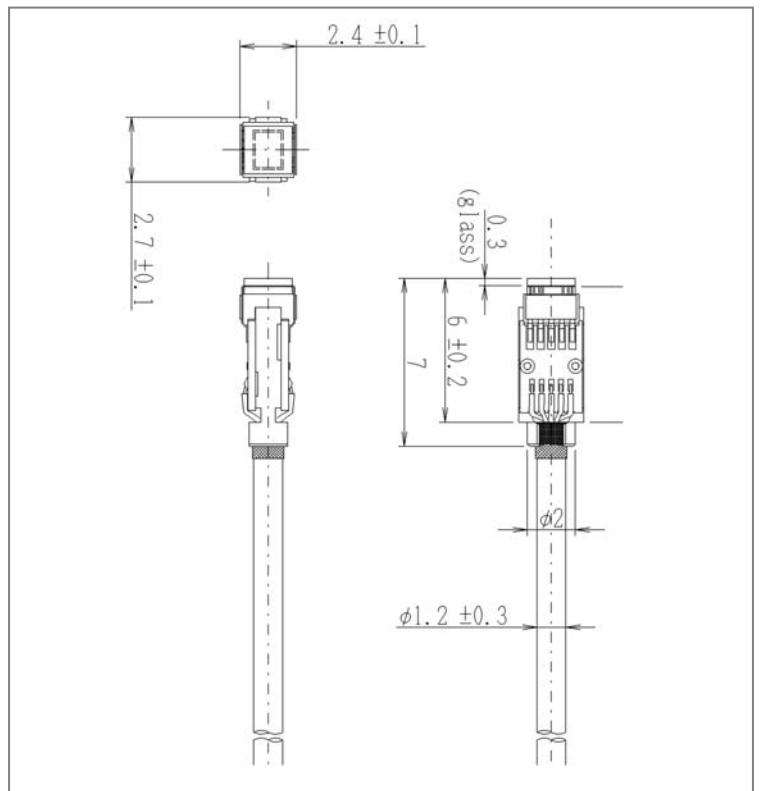
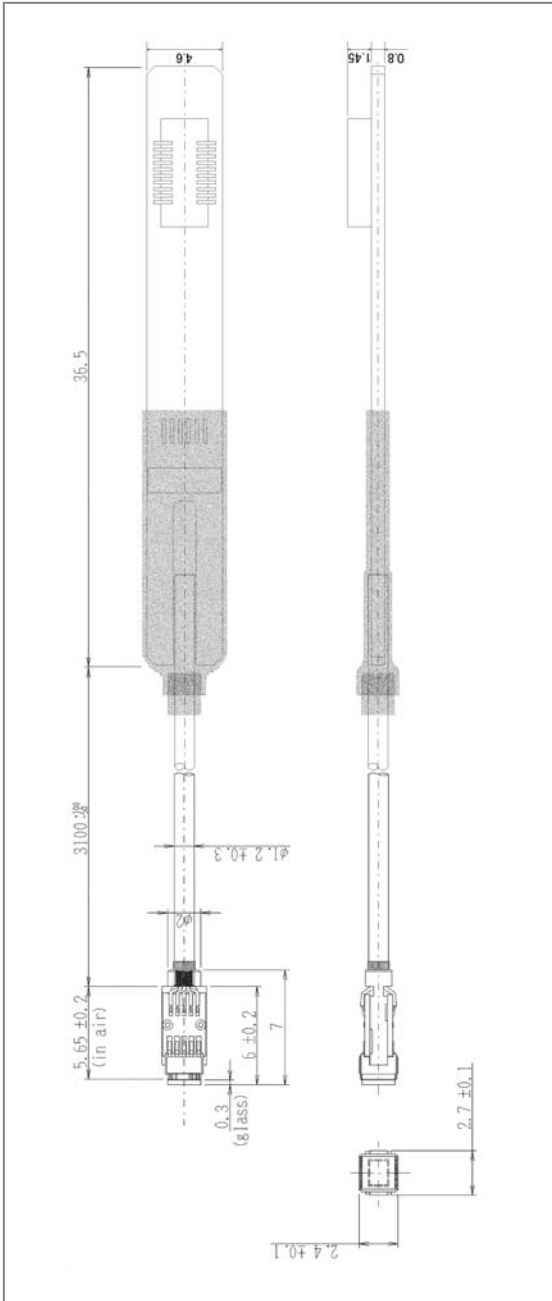
- CSH6710
- cable 3.5m / 5m optional
- Option: termination with customer specific connectors

## Specifications

	CSH6710	CSH6710P
TV system	NTSC	PAL
Image sensor	IT 1/10" CCD	
Active Pixel	510(H)x492(V)	500(H)x582(V)
Scanning Lines	525	625
Scanning system	2:1 Interlaced	
Scanning frequency horizontal	15.734kHz	15.625kHz
Scanning frequency vertical	59.94Hz	50Hz
Aspect ratio	4 : 3	
Sensitivity	300mV	
Environmental conditions	temperature	: 0 to +40°C
	relative humidity	: 30 to 85%
Dimensions	see page 2	
Cable length	3.5 / 5m optional	
External dimension	2.7 x 2.4 x 7.0 mm	
Cable diameter	1.2mm	

Outline

CSH6710/P



Design and Specifications are subject to change without notice

NET GmbH - Phone: +49-8806-9234 0 - Fax: +49-8806-9234 77 - email: info@net-gmbh.com  
 NET USA, Inc. - Phone: +1-219-934-9042 - Fax: +1-219-934-9047 - email: info@net-usa-inc.com